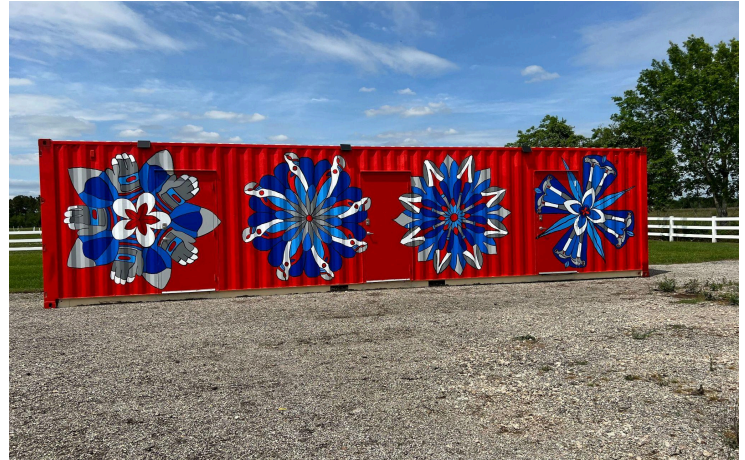


Richmond-Rosenberg Neighborhood Tool Hub How-To

The Houston ToolBank's Richmond-Rosenberg Neighborhood Tool Hub is a modified shipping container with 3 separate storage units. Each unit is secured and locked, accessible with a 4-digit code.

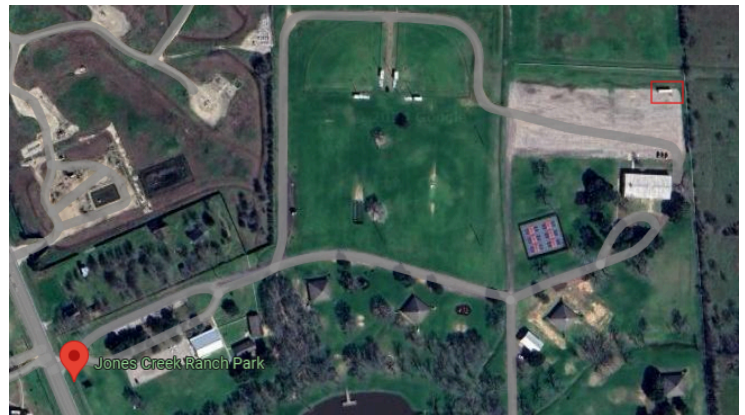
To pick up your order from the Hub, place your order through our [Tool Lending Website \("TOM"\)](#) and select the "Richmond-Rosenberg Hub – Jones Creek Ranch Park" as your pick-up location. Please contact Nancy at nancy.clippard@toolbank.org or 713-674-0262 for more information.



Bin location

The Hub is located at 7714 FM359, Richmond, TX 77406 (at Jones Creek Ranch Park). The Park is open Monday - Sunday 7:00 am - 8:00 pm.

Enter the park and make a left at the 4-way intersection to reach the parking lot. Go to the far corner of the parking lot, and the Hub will be behind the park maintenance building.



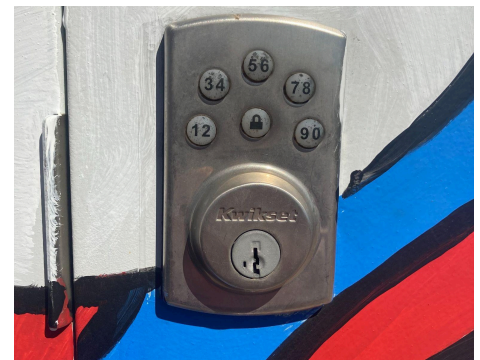
How do I know which bin is mine?

When we schedule your after-hours pick-up or drop-off, we will confirm the use of the bin. At this time we will give you a bin number and a 4-digit code. Each bin is labeled 1-3 in white paint!

How does the lock work?

The 4-digit code we give you at confirmation is your ticket in! Punch in this code and then hit the padlock icon button to unlock your bin.

If you punch in your code and hear the gears working but the lock is not opening, please do not worry. Sometimes our doors can be sticky! Due to Texas weather, sometimes the doorframes shrink and expand. **Push the door inwards with a good amount of pressure with one hand while unlocking the door and the door should open with no problem.** Once you have your items loaded or unloaded, close the bin door and enter your code one more time to ensure it is locked.



Inside the Bin

For pick-ups, your invoice will be with your items. Your invoice will contain an inventory list of what your organization is borrowing from the ToolBank. It is your responsibility to review your order and report any errors within 24 hours to nancy.clippard@toolbank.org.



Borrowing from the ToolBank

All of our standard tool borrowing policies and fees apply when picking up an order from the Hub. Please review all of our policies and reach out to nancy.clippard@toolbank.org with any questions.

[Tool Lending Program How-To](#)

[Houston ToolBank Program Fees](#)

[Tool Cleaning Guidelines](#)

[Direct Tool Delivery Services](#)